

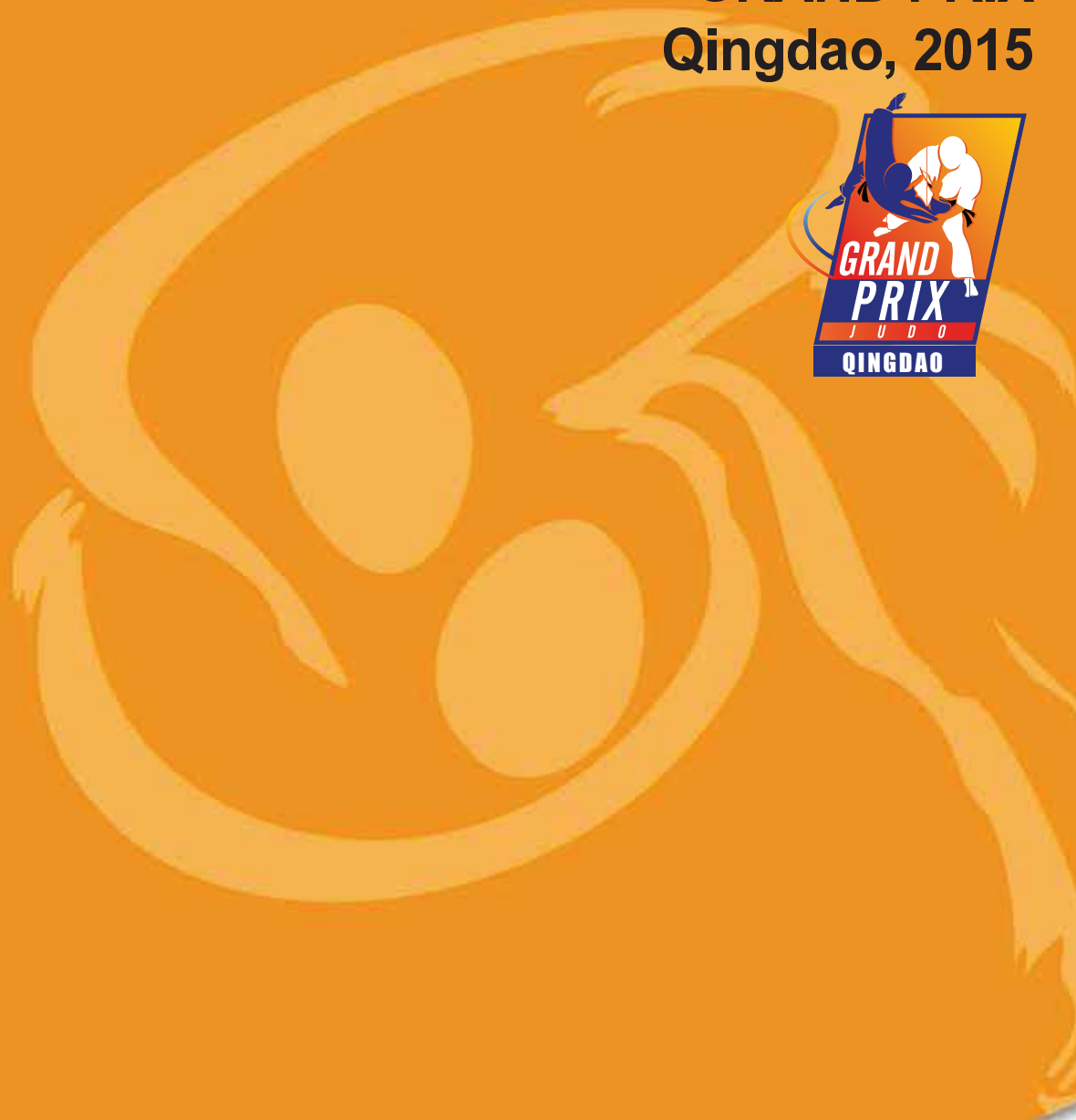
20-22 November 2015

JUDO



World Judo Tour

GRAND PRIX
Qingdao, 2015





Marius L. VIZER
IJF President

Dear participants of the Qingdao Grand Prix 2015, we are very pleased to welcome you to China for the eighth Grand Prix of the year.

As usual the IJF World Judo Tour concludes in Asia and we start the Asian leg of the tour in Qingdao.

Judo in China is on the rise and the latest edition of the Judo Educational Journey through China, which was conducted by the IJF and Chinese Judo Association with support of the Chinese Olympic Committee and International Olympic Committee (IOC), was a resounding success.

The Association is continuing to develop a strong presence in communities at the grassroots level and utilities the showcase of this Grand Prix to connect with elite level judo.

I would like to thank the Chinese Judo Association for continuing to play a major role in the development of our sport. In particular I would like to recognise the President of the Chinese Judo Association, Mr. Zhou Jinqiang, who joined the IJF Executive Committee at the World Championships in Astana, Kazakhstan. I wish good luck to all the athletes, coaches, officials, staff and volunteers and thank you for showing the values of our sport in your work.



**Mr. ZHOU
Jinqiang**
President
Chinese Judo
Association

With the great concern of IJF, JUA and World Judo Family, the international Judo tournament and relevant Judo activities in Qingdao have been upgraded as a professional IJF event. We would like to express our sincere gratitude to Mr. Marius VIZER, IJF President for his trust on us for organizing Qingdao Grand Prix. Under the leadership of IJF, we have achieved a great success and obtained much experience for better organization of Qingdao Grand Prix and development of our beloved Judo sport.

For the new 2013-2016 period, we feel more than happy to go further for organizing Qingdao Grand Prix 2015 with new wind and correct direction of IJF movement. And we feel more confident that 2013-2016 Qingdao Judo Grand Prix will be more dynamic and spectacular.

Please kindly refer to the attachment of the Outline and Entry Forms for your kind reference. I am looking forward to welcoming you and your team during 2014 IJF Judo Grand Prix, Qingdao, from November 20 to 22.

With all my best regards

1. PROGRAM

DATE	TIME	ACTIVITY	
Wednesday 18 November	12:00 – 21:00	Accreditation	Qingdao Guoxin Stadium (Diamond Hall)
Thursday 19 November	09:00-12:00 14:00 After the draw 19:00-20:30 19:30-20:00 20:00-20:30	Accreditation Draw Referee Meeting Press Conference Judogi backnumber check Unofficial weigh-in Official weigh-in Women: -48, -52,-57; Men: -60, -66	Qingdao Guoxin Stadium (Diamond Hall)
Friday 20 November	10:00 17:00 19:00-20:30 19:30-20:00 20:00-20:30	Women: -48, -52,-57; Men: -60, -66 Preliminaries (3 Tatami) Final block (1 Tatami) Judogi backnumber check Unofficial weigh-in Official weigh-in Women: -63,-70; Men: -73,-81	Qingdao Guoxin Stadium (Diamond Hall)
Saturday 21 November	10:00 17:00 19:00-20:30 19:30-20:00 20:00-20:30	Women: -63,-70; Men: -73,-81 Preliminaries (3 Tatami) Final block (1 Tatami) Judogi backnumber check Unofficial weigh-in Official weigh-in Women: -78,+78; Men: -90,-100,+100	Qingdao Guoxin Stadium (Diamond Hall)
Sunday 22 November	10:00 17:00	Women: -78,+78; Men: -90,-100,+100 Preliminaries (3 Tatami) Final block (1 Tatami)	Qingdao Guoxin Stadium (Diamond Hall)
Monday 23 November	Departures / training camp		



2. ORGANIZERS

Chinese Judo Association

Add: Tiantan Dongli Zhongqu Jia 14, Dongcheng District, Beijing, 100061

E-mail: chinajudo@sports.cn

Tel: +86-10-6701 2281

Local Organizers:

Ms. MENG Bo

E-mail: chinajudo@sports.cn

Tel: +86-10-6701 2281

Entry, Hotel Reservation and Transportation: Mr. KANG Zheng

email: grandprixqd2015@126.com Tel: +86 532 80897756, +86 18561417532

Visa Request: Ms. HU Xiaomei

Email: qingdao2015visa@126.com Tel: +86-10-6701 2281

Training Camp: Ms. ZHANG Wei

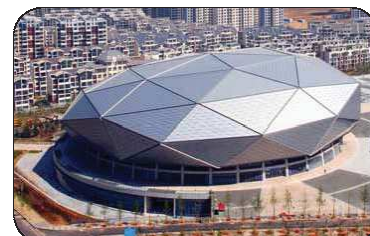
Email: qingdaojudo@126.com Tel: +86 13553059586



3. COMPETITION PLACE

Qingdao Guoxin Stadium (Diamond Hall)

Address: Tong'an Road, Laoshan District, Qingdao





4. HOTELS

Qingdao Ocean Hotel ****

Address : No. 18, Qinling Road, Laoshan District, Qingdao

Distance to Competition Venue: 3.4 km

Single Room: USD 280 per person per night

Double Room: USD 220 per person per night

Both prices are with 3 meals (lunch box in competition venue during competition days)



Haitian Sports Center Hotel ****

Address: No. 55, Haier Road, Laoshan District, Qingdao, China

Distance to Competition Venue: 1.2 km

Single Room: USD 240 per person per night

Double Room: USD 180 per person per night

Both prices are with 3 meals (lunch box in competition venue during competition days)



Haitian Grand Theater Hotel***

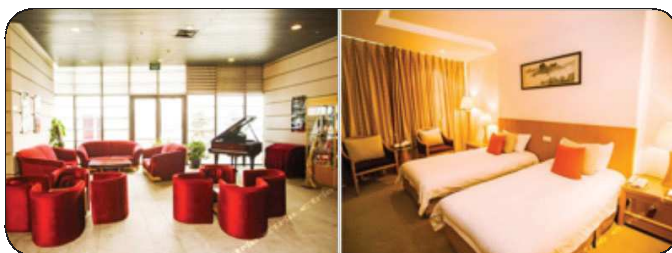
Address: No. 5, Yunling Road, Laoshan District, Qingdao, China

Distance to Competition Venue: 7.7 km

Single Room: USD 210 per person per night

Double Room: USD 150 per person per night

Both prices are with 3 meals (lunch box in competition venue during competition days)



Hotel reservations can ONLY be made through the Organizer on a first come first served basis. Hotel reservations must be made before 20 October 2015. Full payment must be received before 10 November 2015 (Bank transfer account please refer to the below information).

According to the new IJF rule enacted on the 2 December 2012 in Tokyo “the Organizing country should not request fee penalties for countries which cannot make bank transfers but can pay in cash money upon arrival. On the other hand, they should inform well in advance the organizing country and specify the number of participants before the deadline”.

Possible reservations of extra rooms at the check-in will be surcharged with an additional 10%. NO exceptions will be made. All bank fees and bank transfer costs are to be paid by the participating federation.

Cancellation fees: up to 30 days before the arrival, full refund. From 30-10 days before the arrival 50% of the payment. After the 10 November 2015, any cancellation of rooms or no-show will result in 100% of the charge of the hotel costs that must be paid by the National Federations. Cancellations of the rooms cannot be made at the check-in. Injuries, visa problems or sickness are not valid reasons for the cancellation of rooms.

IMPORTANT: All damages to property of hotels or venues resulting from the stay of a national delegation will be charged to the National Federation and must be paid in full.

Payment

We kindly ask all delegations to pay in cash USD upon arrival.

IMPORTANT: Delegations are kindly requested not to leave judogi or have training sessions in the corridors of the official hotels.



5. IMPORTANT INFORMATION

REGISTRATION

- Until 20 days before draw: the correct names of the complete delegation (athletes and officials) have to be registered online at IJF registration page (www.judobase.org). The number of athletes/officials cannot be increased after this deadline.
- Until 5 days before draw: In case a delegation has replacements and/or cancellations these changes must be entered online at IJF registration page (www.judobase.org). Replacements must be like for like i.e. an athlete must be replaced with an athlete, a team official with a team official.
- Until start of accreditation: Any last minute replacements or cancellations must be sent to the IJF registration e-mail: registration@ijf.org. A confirmation will be sent from IJF.

ACCREDITATION

- During accreditation, registered athletes can be replaced by other athletes and registered officials can be replaced by other officials.
- Any cancellation of an athlete on the spot without replacement will result in a penalty (see below).

CANCELLATION

- In case where registered athletes are cancelled on the spot without previous notification to the IJF, a penalty of 100 USD per athlete will apply. This penalty will be charged by the IJF to the National Federation.
- In case a whole delegation is not participating without previous notification, a penalty of 100 USD per athlete will apply for all registered athletes.
- Additionally in all the cases the Organizers have the right to demand the expenses for accommodation and meals generated by any replacement, cancellation or non-participation from the cancelling

Federation according to the deadlines indicated in the event outlines.

ACCOMMODATION

All delegations must stay in one of the official hotels.



6. LAND TRANSPORT

The Organizer will provide free of charge transportation for competing delegations staying at the official hotels: Transfer to and from Qingdao AIRPORT or Qingdao TRAIN STATION from/to hotel, and bus service to and from competition venue.



7. INSURANCE

Each National Federation is responsible for its competitors (the control of non-pregnancy as well as the gender control are placed under the responsibility of the National Federations) and must assume all responsibility for accident and health insurance as well as the civil liabilities for their competitors and officials, during the Qingdao Grand Prix 2015.

The organizer of the Qingdao Grand Prix 2015 and the IJF will not be responsible for any insurance related to the above mentioned matters. Nevertheless the National Judo Federation staging the Qingdao Grand Prix 2015 shall take all necessary actions to provide insurance coverage against civil liability for the entire duration.

The organizer of the Qingdao Grand Prix 2015 and the IJF has no liability for any claims of injury, illness or death arising out of the participation and traveling in connection with these events.



8. DEADLINE FOR APPLICATION

First Entry (entry by number):	20 October 2015
Hotel Reservation:	20 October 2015
Visa request (MUST with Passport Copies):	20 October 2015
Hotel payment:	10 November 2015
Travel information:	20 October 2015

Final Entry (entry by names): The registration must be done using the IJF online registration system at <https://www.judobase.org> until **30 October 2015 23:59 CET!**

Nations missing the registration deadline will not be allowed to start.

No exceptions will be made! All competitors, coaches and officials must be entered in time.

After the deadline no additional persons can be added.

NOTE: It will be allowed to replace already registered coaches or officials; competitors only in the case of an injury. For any support please contact registration@ijf.org before the end of the deadline.



9. CONTROL OF ENTRIES & ACCREDITATION

The control of entries and issuing of accreditation cards will take place at Qingdao Guoxin Stadium (Diamond Hall).

on 18 November from 12:00 to 21:00

on 19 November from 09:00 to 12:00

At least one team official must attend in time to confirm the entries of all athletes and officials with his/her signature. A delayed appearance or no-show at control of entries may result in the exclusion of all participants from the draw and the event. In case of unforeseen delay of arrival the Federation must contact immediately the organizer and the IJF registration team (registration@ijf.org). An accreditation card with photograph will be issued to competitors, officials and media. This accreditation card should be carried at all times. Passports or photocopy of passports from all competitors must be available on request.

Number of accreditations for officials:

- 1 – 4 competitors: 3 officials
- 5 – 9 competitors: 5 officials
- 10 or more competitors: 7 officials

Extra accreditation for delegation members can be purchased from the organizing committee for \$100.00 USD for the days of competition.



10. NUMBER OF PARTICIPANTS

Each Country: Maximum 2 competitors per weight category

Organizing Nation: Maximum 4 competitors per weight category

Note:

- Competitors can only be entered in one weight category
- Only entries of National Judo Federations – IJF Members will be accepted

Age: Participating athletes must be born in 2000 (15 years in the calendar year) or before.



11. COMPETITION RULES

a. The competition will be conducted in accordance with the latest IJF Sport and Organization Rules (SOR), IJF Refereeing Rules and IJF Anti-Doping Rules. Especially refer to the New Uniform IJF Tournament System Quarterfinal (last 8) repechage.

b. Weight categories:

- Men: -60kg, -66kg, -73kg, -81kg, -90kg, -100kg, +100kg
- Women: -48kg, -52kg, -57kg, -63kg, -70kg, -78kg, +78kg

c. Duration of contest: MEN 5 minutes & WOMEN 4 minutes (real time).



12. REFEREES

The IJF Refereeing Commission will appoint the referees for the event.



13. WEIGH-IN

a. The weigh-in will be carried out in accordance with the IJF SOR.

b. The athlete's official weigh-in will be scheduled the day before the competition at 20:00.

- Unofficial weigh-in: 19:30 to 20:00 (the day before)
- Official weigh-in: 20:00 to 20:30 (the day before)

c. The weigh-in will be held in the Qingdao Guoxin Stadium (Diamond Hall).



14. DRAW

a. The draw will be conducted at 14:00 on 19 November 2015. Place: Intercontinental Qingdao.

b. Each National Federation must send at least one delegate to attend the draw. A maximum of three (3) delegates per National Federation (2 officials and 1 athletes' delegate) will be authorized.

c. The top eight (8) from the entered competitors in each weight category will be seeded according to the current World Ranking List.



15. JUDO GI CONTROL

a. **Approved judogi:** Competitors should wear an IJF approved judogi supplied by one of the following manufacturers: Greenhill, SFJAM NORIS, DANRHO, MIZUNO, Double D Adidas, HAYAKAWA, Fighting Film, Budo Sport AG, ESSIMO, MATSURU B.V, KAPPA, DAEDO.

b. **Judogi Control:** It will be operated with a sokuteiki by IJF Education Commission prior to the fight. Judogi must have an IJF Official Label "APPROVED JUDO GI" (red borders) with an optical code, which cannot be falsified. The label will be controlled with an optical lamp. Belts must hold an IJF official label (blue or red borders).

c. **Backnumber:** Each competitor is obliged to have sewn on the back of his judogi a backnumber bearing his surname and his National Olympic Committee abbreviation. The backnumbers must be fixed horizontally and centered on the back of the judogi. They must be placed at a distance of 3cm from the bottom of the collar. The backnumber can only be ordered from www.ijfbacknumber.com or www.mybacknumber.com

d. **Advertising:** Competitors should carry on the back of their jacket the IJF and organizer dedicated sponsors of the event. Advertising on the judogi must be in compliance with the IJF regulations. Refer to IJF SOR.

e. **National Emblem:** Athletes can have their national emblem on the left front part of the jacket within a space of 100cm².

If an athlete does not respect the judogi rules, the coach who is responsible for the athlete would be suspended for the rest of the competition of the day. In the case of a repeated offence the coach would then be suspended for the rest of the competition.

Judogi Inspection

The Education and Coaching Commission will inspect the judogi every evening. The checking process will start half an hour prior to the unofficial weigh-in and will end at the same time as the official weigh-in.

The backnumber and publicity should comply with the current IJF judogi regulations.

The official sponsor label of the event will be given provided that:

- The judogi are clean and dry.
- The backnumber, publicity and emblem are properly sewn and do not show any wear or tear.
- All previous advertising has been removed.

Guide to attaching and removing the sponsor label:

- Lay the judogi flat and attach the new sponsor label of the event on the back of the correct judogi.

White judogi: IJF sponsor

Blue judogi: Organizer's sponsor

- Ensure the label is firmly attached around the edges.
- Immediately after the competition and before washing remove the sponsor label.



16. PARTICULAR RULES FOR WOMEN

Women must wear a tee-shirt beneath their judogi. It must be as follows:

- White in colour, short-sleeved and round-necked.
- Marking of the manufacturer logo, of maximum 20 cm² is authorized. It cannot be visible when the judogi is fastened.
- The national emblem representing the official identification of a nation, a National Olympic Committee or national federation member of IJF can be fixed on the chest, on the left side.
- No commercial marking can appear.

NOTE: Male athletes are not permitted to wear underwear on the top of the body.



17. COACHING

New Coaches' Rules

The coaches nominated by their National Federations, while in the mat side chair, should respect the following IJF coaches' rule.

In the case of not respecting the rules the following procedure will happen:

- First warning, informed by the referee, the coach can continue to coach from the mat side chair.
- Second warning, informed by the referee, the coach should move from the mat side chair to the tribune for the rest of the day.
- In case a coach has been moved from the mat side chair twice during the event, the coach will be suspended (cannot coach from the mat side chair) for the rest of the event, and the next event that he/she will attend

In case a coach has been moved from the mat side chair, and continues coaching from the tribune, the coach will be suspended for the rest of the event, and the next event that he/she will attend.

Coaches cannot coach from the tribune or any place inside the venue!

This will be considered as acting against the rules and punished with the same procedure as described above. In case of having just one warning in each contest, the coach can continue coaching the next contests. The warnings from different contests are not cumulative.

Code of behaviour of coaches as defined in the IJF SOR, will be strictly observed, including the dress code. The coaches should respect the Code of Ethics, IJF statutes and regulations. The coach is responsible for his athlete's conduct from entering the competition venue until leaving it, before and after each contest.

The coaches should make sure that their athletes follow the instructions of the organizers and in particular the schedules and judogi control protocols.

Coaching will be strictly limited to communication with athlete, tactical advice, encouragements and instructions in unexpected situations such as injury etc. The coach will remain seated on his chair throughout the contest.

Coaches are not allowed to give indications to the athletes while they are fighting. Only during the pause (after matte), will they be permitted to give indications to their athletes. After the pause is finished, and the contest continues (Hajime), coaches will have to keep silent again. If a coach does not follow these rules, he can be expelled from the competition area. If the coach persists with this behaviour from outside the competition area, he could be penalized.

Forbidden behaviour of a coach:

- Any comments on or criticism of the referees' verdicts.
- Demanding correction of the referees' decisions.
- Any abusive gesture toward referees, officials or public.
- Touching, hitting, kicking etc. the advertising panels or any equipment.
- Any kind of behaviour showing disrespect to all parties involved in the competition.



18. DOPING CONTROL

Doping control will include in each category:

- a. the winner of the category
- b. one of the three other medal winners by draw

The draw (for b) is carried out in accordance with the Anti-doping Rules and the Sport and Organization Rules of the IJF during the competition before the start of the finals block.

Competitors have to report to the Doping Control Station immediately after signing the Notification form. Pursuant to WADA ISTI Art. 5.4.4, prior doping control athletes are allowed to take part in the awarding ceremony and fulfil their press commitments or receive medical treatment if needed. The selected competitors will be constantly accompanied by an official chaperone (appointed by the Organizing Committee) from the time of Notification until arriving to the Doping Control Station. A person of the athletes' choice (team doctor, coach, trainer, delegation head...) may accompany them.



19. AWARDS & PRIZES (IN TOTAL 100,000 US\$)

The organizer shall provide for presentation:

A certificate of participation for each participant.

Medals and Prizes:

First place: Gold medal, and US\$3000 (judoka: 2400USD and coach 600USD)

Second place: Silver medal and US\$2000 (judoka: 1600USD and coach 400USD)

Two Third places: Bronze medals and US\$1000 for each (judoka: 800USD and coach 200USD)



20. TRAINING FACILITIES

Planning and scheduling of the training sessions will be organized taking into consideration the request made by National Federation everyday on the basis first request made first served. If you are interested in booking training please send a request for a booking sheet to the Organizer.



21. VISA

The Organizer is happy to help any country with obtaining visa for athletes and officials. For nations, who need VISA to enter China, please send the Organizer as soon as possible (latest 20 October 2015) list of participants according to visa application form with full names, passport numbers, date of birth, and positions (MUST send together with scanned Passport Copies according to the relevant updated requirement of Chinese Government).



22. FUNDAMENTAL PRINCIPLE

All National Federations, officials, coaches and athletes participating in the Qingdao Grand Prix 2015 have to respect and accept the authority of the IJF officials, the Statutes, the Sports and Organization Rules, the Refereeing Rules of the International Judo Federation, as well as the IJF Antidoping Rules. According to the IJF Rules and SOR Provisions (point 23.8), individuals deemed to have acted against the IJF, its principles or purposes shall be subject to suspension or expulsion from the event and/or cancellation of their accreditation cards.



23. AWARD CEREMONY

The competitors wearing their white judogi (no shoes, flip flops or socks) will stand behind the podium according to the following order 2,1,3,3. Competitors having won a medal have to attend the ceremony to receive their medal in person. If a competitor is absent during the awarding ceremony for no valid reason they will lose the right to have the medal. It is strictly forbidden for competitors on the podium to bring national flags or the similar identification other than the one represented in the regular manner on their equipment. Any demonstration of religious, political, personal or commercial sign is prohibited and so is wearing a cap or any other head cover.

TRAINING CAMP

Date: November 23-24, 2015

Training Place: meeting room, 2nd floor, reception center, Seashore Garden Hotel

Accommodation: Seashore Garden Hotel, No. 4, Zhanghua Road, Shinan District, Qingdao

Financial Terms:

Single room (with 3 meals) : USD 180 per night per person

Double room (with 3 meals) : USD 150 per night per person

Contact:

Ms. ZHANG Wei, +86 13553059586

Email: qingdaojudo@126.com

WELCOME TO QINGDAO, CHINA!!!

IJF President's Office

HUN 1051 Budapest,
Jozsef Attila str. 1
www.ijf.org

IJF General Secretariat

Fédération Française de Judo
21-25 Avenue de la Porte de Châtillon
F-75 680 Paris Cedex 14 France

IJF Lausanne Office

1007 Lausanne
Avenue Frédéric-César-de-La-Harpe 49
Switzerland
www.ijf.org

