

Aquece Rio

TEST EVENTS

JUDO Test Event Information

(version – 07 December 2015)



TO ALL WORLD JUDO MEMBERS

Dear President,

The Rio 2016 team is pleased to announce that the Judo Test Event - Aquece Rio International Judo Tournament is scheduled for 8 - 9 March 2016. This event, organised by Rio 2016, is part of the Rio 2016 Test Events Programme and is a great opportunity for the Nations to test the Field of Play and get the atmosphere of the Games.

We would like to invite your National Federation to participate in our event. The Aquece Rio International Judo Tournament will be organised in accordance with International Judo Federation rules.

We are looking forward to welcoming you and your teams, to Rio de Janeiro - Brazil.

Sincerely,

Rio 2016 Sport Department

Message of IJF

2016 is an important year for the Olympic Movement, in general and for the International Judo Federation, as well. With the Summer Olympics scheduled for a few months later, it is time to ensure that all efforts are directed towards the achievement of the objectives laid down 4 years ago and to show the world the progress made since the last Olympics. At the centre of these objectives are the judoka aiming for glory and the sport, itself.

It is my pleasure to note that the preparations for the judo competition at the Olympics in Rio de Janeiro are progressing towards completion and the Aquece Rio International Judo Tournament will allow aspirants in the competing weight categories to gain familiarisation with the surroundings that will greet them in August 2016. The purpose of the test event is also to bring judo to the people of Brazil and I am certain that they will embrace our sport wholeheartedly and begin a journey of appreciation that will extend farther than even the Olympics.

I wish the judoka participating in the test event great success and extend my best wishes to all the athletes already qualified for the Olympics and to those on the path of qualification. I thank Rio 2016 for their efforts in preparing the best facilities for the Judo Test Event, which will assist the participants in their pursuit of excellence.

Sincerely,

Marius Vizer

IJF President

1. COMPETITION INFORMATION

1.1. EVENT INFORMATION

Name of the Event	Aquece Rio International Judo Tournament
Sport Events	52kg, 63kg Women & 66kg, 81kg Men
Venue	Carioca Arena 1 (Olympic Park)
Location	Barra
Competition Dates	8 - 9 March 2016
Training Dates	6 - 7 March 2016
Entry Fees	No
Ticketed Event	No - 1000 spectators friends and family

Training:

The training venue is next to the competition venue, and will be available on 6 and 7 March 2016.

An International Training Camp will be organized by the Brazilian Judo Confederation starting from 10 March. For more information please contact cbj@cbj.com.br.

Weather:

March (Average):

Temperature 23°C

Low Temperature 19°C

High Temperature 26°C

Sunshine Hours - 7 Hours

Rainfall days - 13 days

1.2. PROGRAMME

This preliminary programme is subject to change, based on the number of participants. All changes will be communicated to the teams accordingly.

DATE	TIME	ACTIVITY	LOCAL	
Sunday 6 March 2016	09:00 - 21:00	Accreditation	Carioca Arena 1 (Olympic Park)	
	14:00 - 20:00	Training (available time)	Carioca Arena 2 (Olympic Park)	
Monday 7 March 2016	9:00 - 20:00	Training (available time)		Carioca Arena 1 (Olympic Park)
	14:00	Draw		
		Referee Meeting		
	19:30 - 20:00	Unofficial weigh-in		
20:00 - 20:30	Official weigh-in -52kg, 66kg			
Tuesday 8 March 2016	10:00 - 13:00	Competition (on 2 tatami)	Carioca Arena 1 (Olympic Park)	
		-52kg, -66kg		
	15:30 - 18:10	Final Block (on 1 tatami)		
	19:30-20:00	Unofficial weigh-in		
	20:00-20:30	Official weigh-in -63kg, 81kg		
Wednesday 9 March 2016	10:00 - 13:00	Competition (on 2 tatami)	Carioca Arena 1 (Olympic Park)	
		-63kg, 81kg		
	15:30 - 18:10	Final Block (on 1 tatami)		

1.3. REGISTRATION PROCESS

The Aquece Rio International Judo Tournament is an invitational competition. There is no limit of athletes per Country per category.

PRELIMINARY & FINAL REGISTRATION

8th February 2016: all teams have to send the first entry form to the organizers

Final Entry (entry by names): The registration must be done with the IJF online registration system at <https://www.judobase.org> until 16 February 2016 **23:59 CET!**

Start date for online registration: **19 October 2015**

NOTE: It will be allowed to replace already registered coaches or officials; competitors only in the case of an injury. For any support please contact registration@ijf.org before end of deadline.

1.4. CONTROL OF ENTRIES & ACCREDITATION

The control of entries and issuing of accreditation cards will take place at the Competition Venue (Carioca Arena 1) on [6 March 2015 from 09:00 to 21:00](#)

At least one team official must attend to confirm the entries of all athletes and officials with their signature. A delayed appearance or no-show at control of entries may result in the exclusion of all participants from the draw and the event. In case of unforeseen delay of arrival the Federation must contact immediately the organizer (judo@aquecerio.com) and the IJF registration team (registration@ijf.org).

If you have any athlete under 18, please contact the event organizers (judo@aquecerio.com).

1.5. NUMBER OF PARTICIPANTS

There is no limit of officials and athletes per Country per category.

1.6. COMPETITION RULES

a. The competition will be conducted in accordance with the latest IJF Sport and Organisation Rules (SOR), IJF Refereeing Rules and IJF Anti-Doping Rules. Especially refer to the New Uniform IJF Tournament System Quarterfinal (last 8) repechage.

b. Weight categories:

Individuals (It will be applied 2kg tolerance):

- Men: -66kg, -81kg
- Women: -52kg, -63kg

1.7. WEIGH-IN

a. The weigh-in will be carried out in accordance with the IJF SOR.

b. The athlete's official weigh-in will be scheduled the day before the competition at 20:00.

- Unofficial weigh-in: 19:30 to 20:00 (the day before)
- Official weigh-in: 20:00 to 20:30 (the day before)

c. The weigh-in will be held in the Events Center of IBIS and Novotel Hotel.

1.8. DRAW

a. The draw will be conducted at 14:00 on 7 March 2016 in the Competition Venue (Carioca Arena 1).

- b. Each National Federation must send at least one delegate to attend the draw. A maximum of three (3) delegates per National Federation (2 officials and 1 athletes' delegate) will be authorized.
- c. The top eight (8) from the entered competitors in each weight category will be seeded according to the current World Ranking List (WRL).

1.9. JUDO GI CONTROL

- a. **Approved judogi:** Competitors should wear an IJF approved judogi supplied by one of the following manufacturers: Greenhill, SFJAM NORIS, DANRHO, MIZUNO, Double D Adidas, HAYAKAWA, Fighting Film, Budo Sport AG, ESSIMO, MATSURU B.V, KAPPA.
- b. **Judogi Control:** The IJF Education Commission will operate it with a sokuteiki prior to the contest. Judogi must have an IJF Official Label "APPROVED JUDO GI" (red borders) with an optical code, which cannot be falsified. The label will be controlled with an optical lamp. Belts must hold and IJF official label (blue or red borders). Each of the competition clothing articles (jacket, trousers and belt) must have an IJF official label.
- c. **Backnumber:** Each competitor is obliged to have sewn on the back of his judogi a backnumber bearing his surname and his National Olympic Committee abbreviation. The backnumbers must be fixed horizontally and centred on the back of the judogi. They must be placed at a distance of 3cm from the bottom of the collar. The backnumber can only be ordered from www.ijfbacknumber.com or www.mybacknumber.com
- d. **Advertising:** Competitors should carry on the back of their jacket the IJF and organizer dedicated sponsors of the event. Advertising on the judogi must be in compliance with the IJF regulations. Refer to SOR, appendix C.
- e. **National Emblem:** Athletes can have their national emblem on the left front part of the jacket within a space of 100cm² .

If an athlete does not respect the judogi rules, the coach who is responsible for the athlete would be suspended for the rest of the competition of the day. In the case of a repeated offence the coach would then be suspended for the rest of the competition.

Judogi Inspection

The judogi will be inspected by the education team every evening. The checking process will start half an hour prior to the unofficial weigh-in and ends by the time limit of the official weigh-in.

The backnumber and publicity should comply with the current IJF judogi regulations.

The official sponsor label of the event will be given providing that:

- The judogi are clean and dry
- The backnumber, publicity and emblem are properly sewn and do not show any particular tear.
- All previous advertising has been removed

Procedures guide to attaching the sponsor label:

- Lay the judogi flat and attach the new sponsor label of the event on the back of the correct judogi.

White judogi: IJF sponsor

Blue judogi: Organizers' sponsor

- Ensure the label is firmly attached around the edges.

1.10. PARTICULAR RULES FOR WOMEN (T-shirt)

Women must wear a t-shirt beneath their judogi. It must be as follows:

- White in colour short-sleeved and round-necked.
- Marking of the manufacturer logo, of maximum 20 cm² is authorized. It cannot be visible when the judogi is fastened.
- The national emblem representing the official identification of a nation, a National Olympic Committee or national federation member of IJF can be fixed on the chest, on the left side.
- No commercial marking can appear.

NOTE: Male athletes are not permitted to wear underwear on the top of the body.

2. Logistics

2.1 ACCOMMODATION AND TRANSPORT

Accommodation and transport costs are the National Federation's financial responsibility. The teams will organize and pay for transport (Airport-Hotel-Airport and Hotel-Venue-Hotel), accommodation and meals (lunch and/or dinner at the hotels), if required, directly with the agency. The agency will send to the teams the Hotel Reservation Form and the Transport Form.

To assist the participating national federations with accommodation/meals at the hotels and transport, Rio 2016 has appointed Alatur as the official Rio 2016 Test Events Agency. Please see below the agency contact details:

ALATUR

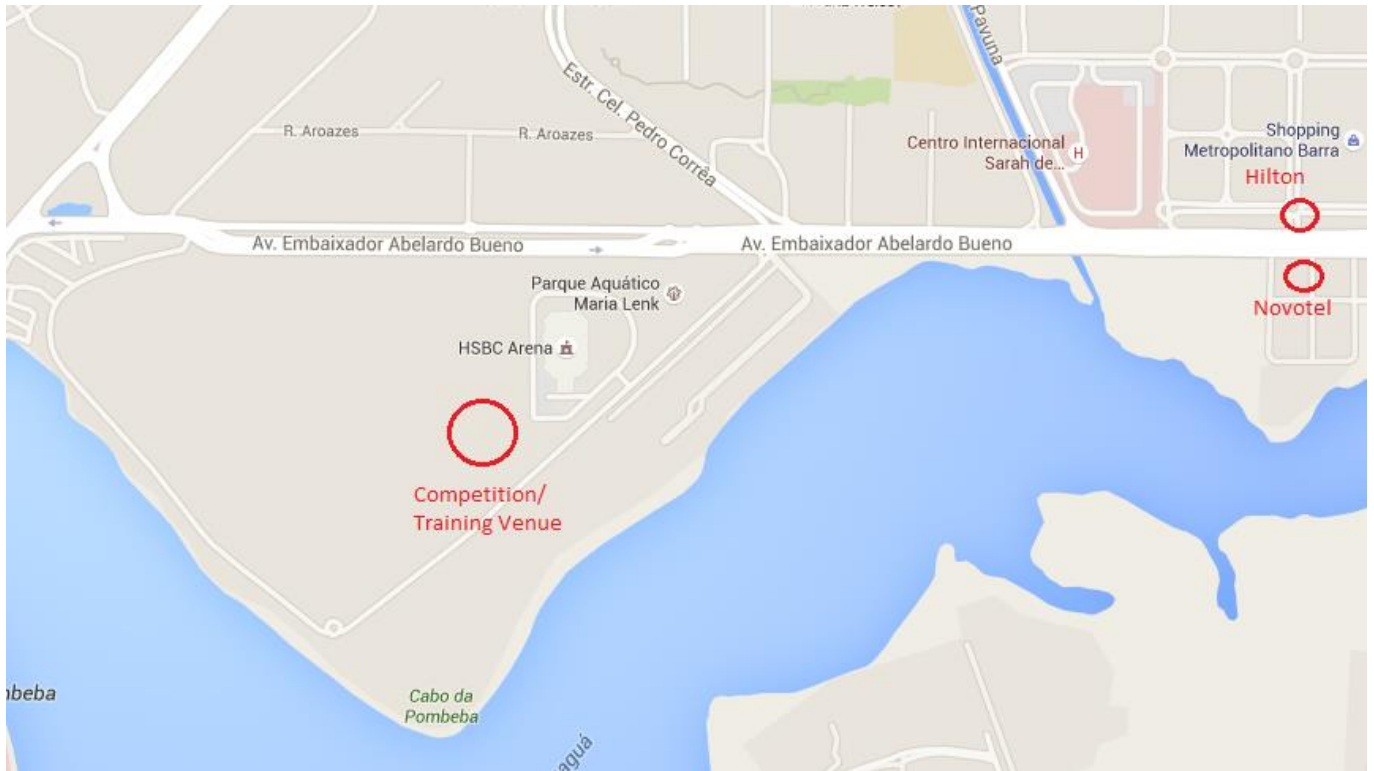
+55 11 3217 9041 or +55 11 3217 4329.

test-events@alatur.com

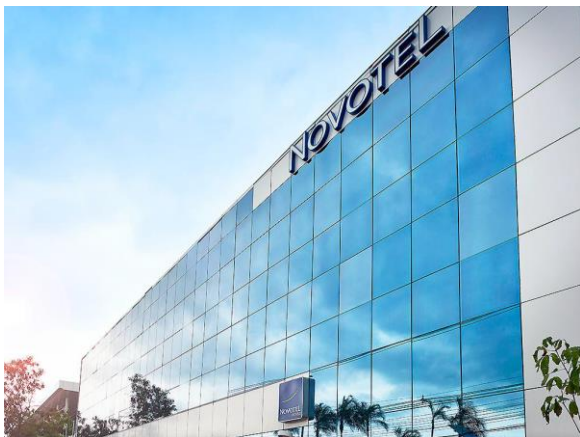
Important note: Alatur must be contacted only for accommodation and transport purposes. Information about the competition must be forwarded to judo@aquecerio.com

ACCOMMODATION AND MEALS

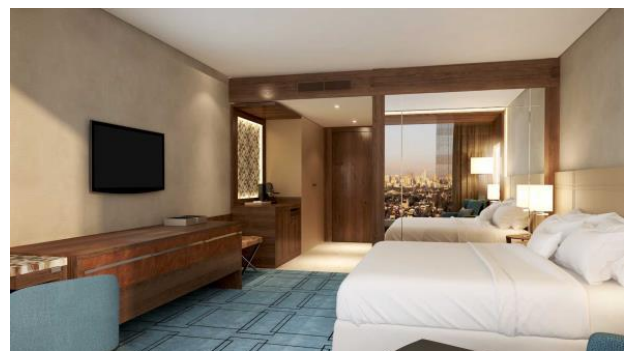
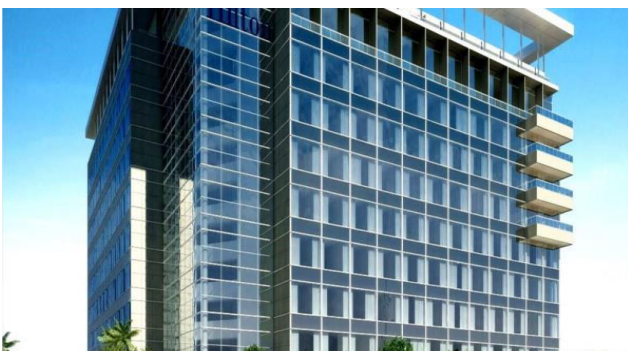
We are pleased to propose two official hotels options close to the venue:



Novotel Parque Olímpico (<http://www.novotel.com/pt/hotel-8177-novotel-rio-de-janeiro-parque-olimpico/index.shtml>).



Hilton Barra Rio de Janeiro (http://www.hiltonhotels.com/pt_BR/brasil/hilton-barra-rio-de-janeiro/)



Hotels (Prices in Reais)	Single Room*	Twin Room*	Price per Meals (lunch or dinner)
NOVOTEL PARQUE OLIMPICO	R\$ 430,00	R\$ 495,00	R\$ 80,00
HILTON BARRA	R\$ 495,00	R\$ 495,00	R\$ 79,00

*Prices per room per night including bed & breakfast.

PAYMENT POLICY FOR ACCOMMODATION

The 100% deposit of amount for hotel accommodation should be paid by **8 February 2016**. Accommodation cannot be guaranteed, nor at the above quoted rates beyond this deadline. A balance invoice will be issued after payment.

TRANSPORT

The official Rio 2016 Test Events Agency Alatur will propose transport from/to Rio de Janeiro Airport and a Shuttle service between the Official Hotel and the Competition Venue.

Airport Transfer includes a Meet and Greet service with English-speaking coordinators at the International Airport Arrivals to personally welcome Rio 2016 clients with a specific name board and escort them to the transfer to the hotel.

Hotel-Venue-Hotel Shuttle includes English-speaking coordinators at the official hotel and venue to assist with boarding, advise on timings and manage the drivers.

SERVICE	ROUTE	VEHICLE	TOTAL COST (BRL) PER PERSON*
TRANSFER	AIRPORT/OFFICIAL HOTELS/AIRPORT	TBD – Saloon car / Van / Mini-Bus / Bus	R\$ 394,00
SHUTTLE	OFFICIAL HOTELS / VENUE / OFFICIAL HOTELS		

*The total cost per person includes 1 (one) transfer in and out from the airport to the official hotel, and 4 (four) days of shuttle (official hotel x venue x official hotel).

If your team does not need one of the above transport, please inform to Alatur agency.

PAYMENT POLICY FOR TRANSPORT

The 100% deposit of transport amount should be paid by **23 February 2016**. After this deadline Alatur cannot guarantee the transport, nor the above quoted rates.

2.2 CATERING

Teams are responsible for their own catering. A food concession will be offer at the Competition Venue. Refreshment (water, cereal bars, fruits) for athletes will be offered, at the Competition Venue, free of charge by Rio 2016. There is an option to have lunch and/or dinner at the hotel (full board option), if required, when booking accommodation via Alatur.

Only industrialized products, containing a label with information (such as: product name, list of ingredients, weight, CNPJ, lot identification, expiration date) and that not requires refrigeration, may be brought to the Competition Venue. Example of products: cereal bar, cookies and nuts.

It is important to inform that Rio de Janeiro Health Agency ("Subvisa") has full autonomy to inspect, dispose and notify any non-compliant process.

Rio2016 is responsible for food products within the Competition Venue.

2.3 VISA PROCESS

Rio 2016 has developed a thorough Visa Programme that will also cover those participating in all Test Events.

For all the participants that are nationals from countries who need a visa to enter Brazil (please check the page 27 of the guide available on <http://www.aquecerio.com/judo>), Rio 2016 will provide introduction letters that must be submitted with the visa application at the chosen Brazilian Consulate/Embassy abroad. To request an Invitation Letter, please send an email to judo@aquecerio.com with a list of the applicants, including their full names (as per their passports), passport numbers, dates of birth, country and city where the visa will be made.

Prior to making arrangements for your travel, we recommend you to check the Rio 2016 Visa and Work Permit Guide attached. In this document you will find information on which type of Visa you will need to have. You will also be able to find instructions on how to apply for your visa.

It is also important to be aware of the time frame for issuing a Visa to Brazil will depend on the country where the participant is applying. Please check the website of the chosen Brazilian Consulate or Embassy for further information on turnaround times.

Each National Federation is responsible for its competitors (the control of non-pregnancy as well as the gender control are placed under the responsibility of the National Federations) and must assume all responsibility for accident and health insurance as well as the civil liabilities for their competitors and officials, during the Aquece Rio International Judo Tournament.

The organizer of the Aquece Rio International Judo Tournament and the IJF will not be responsible for any insurance related to the above-mentioned matters.

The organizer of the Aquece Rio International Judo Tournament and the IJF have no liability for any claims of injury, illness or death arising out of the participation and travelling in connection with the Aquece Rio International Judo Tournament.

3. WEBSITE

The official website of the Aquece Rio International Judo Tournament:
<http://www.aquecerio.com/judo>

4. CONTACT

For any questions, please contact Kenji Saito:

Kenji Saito
Rio 2016 Judo Sport Manager
judo@aquecerio.com
Phone: (+55 21) 2016.6378

This contact should be used solely by National Federations in matters relating to the Aquece Rio International Judo Tournament. In this respect, please do not hesitate to use it. Any other subject relating to the Rio 2016 Olympic or Paralympic Games must be directed through the relevant NOC/IPC contact.

Rio 2016 Organising Committee
for the Olympic and Paralympic Games
rio2016.com